



BALLAST-OPTIMISED FLAT ROOF SYSTEMS WITH 10° MODULE PITCH

ALTEC FD_OPTIFLEX-10

- No roof penetration
- Up to 0.5 m distance from roof edge
- 4 variants made up from just a few components
- Choose whether to clamp on the short or long side
- Suitable for lots of module sizes
- Tested in a wind tunnel
- Large-area load distribution thanks to wide base rails
- Integrated cable duct

The mounting system, made entirely of aluminium, is suitable for flat roofs with a pitch of up to 5°. The modules can be clamped on the short or long side. The system comes with an additional rail for clamping on the long side. The rail prevents the modules from bending under high snow loads.

The supports can be used for both the east/west system and the south-facing system. The wide contact surface of the rails protects the roof cladding, which is also protected by a system mat. The wide surface-area reduces the contact pressure on rooftop insulation as well.

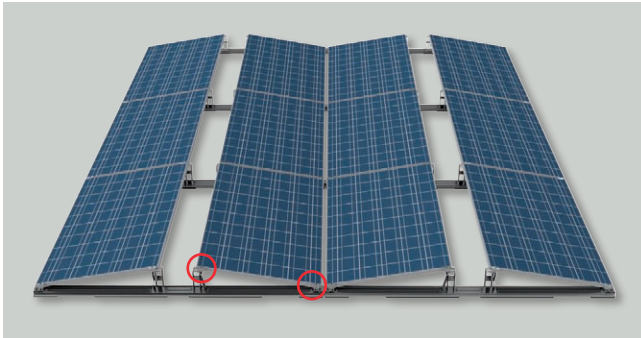
You only need two tools to assemble the system.

Ballast of any size can be secured using angle profiles. The system is compatible with all ALTEC module clamps.



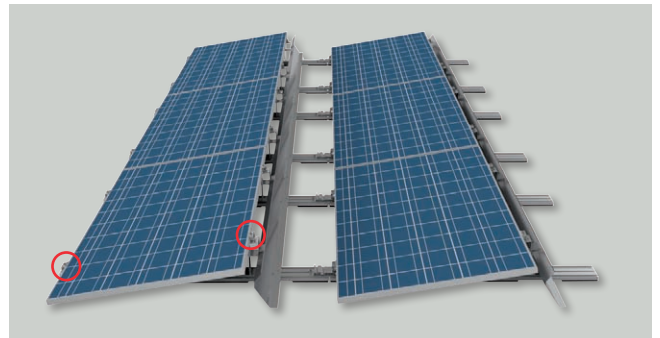
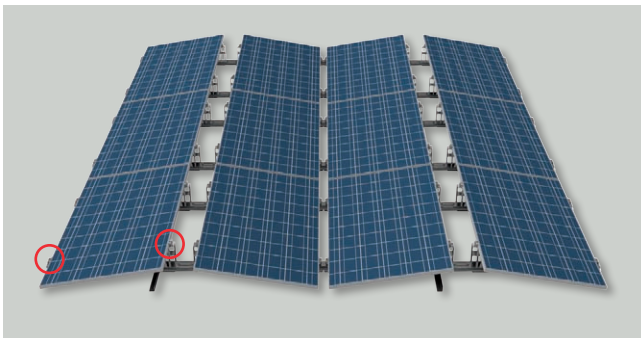
Clamping on the short side

For low snow loads and medium-sized modules, clamping on the short side of the modules can be cost-effective and save on material. Four rails are used for three modules.



Clamping on the long side

For high snow loads and/or large modules, you can clamp on the long side of the modules. Six rails are used for three modules.



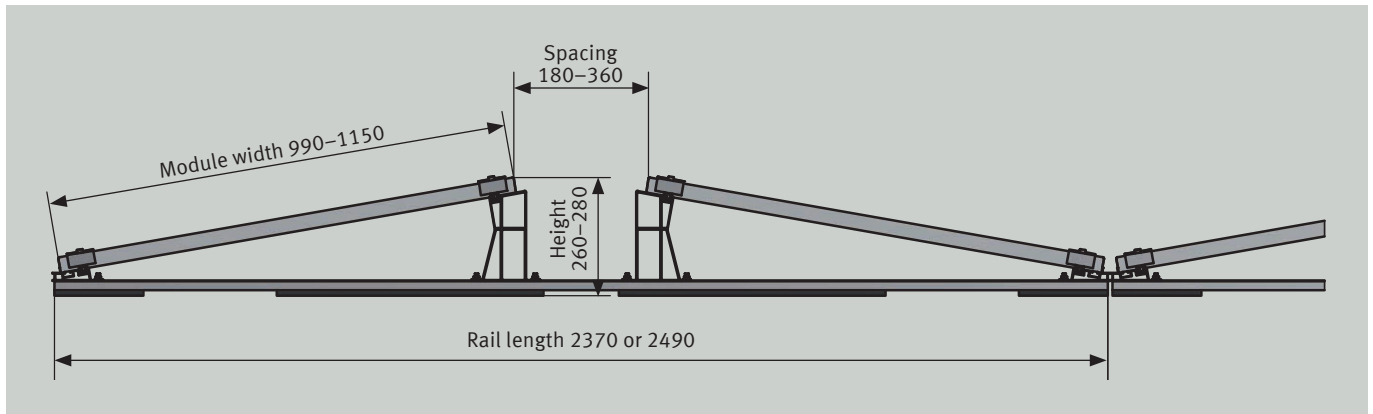
The same components are used for both variants, so it is easy to change the module size at the last minute, for example.

Rail lengths and module sizes

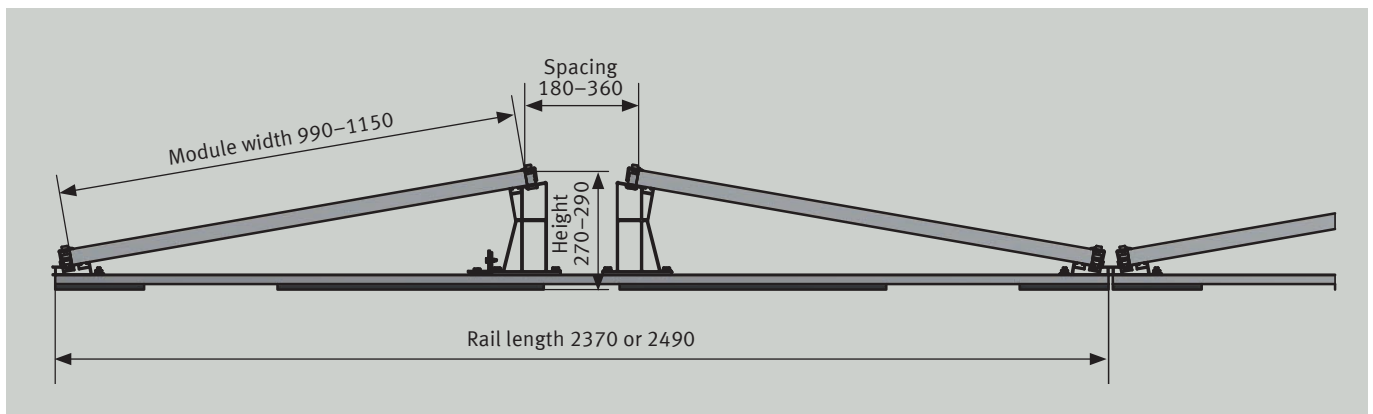
The rail length depends on the module sizes (module width of 990 mm to 1150 mm and module length of 1500 mm to 2200 mm). No additional rail connectors are required, as the rails are connected by the front module support.

The module spacing at the front is therefore already set and does not need to be measured.

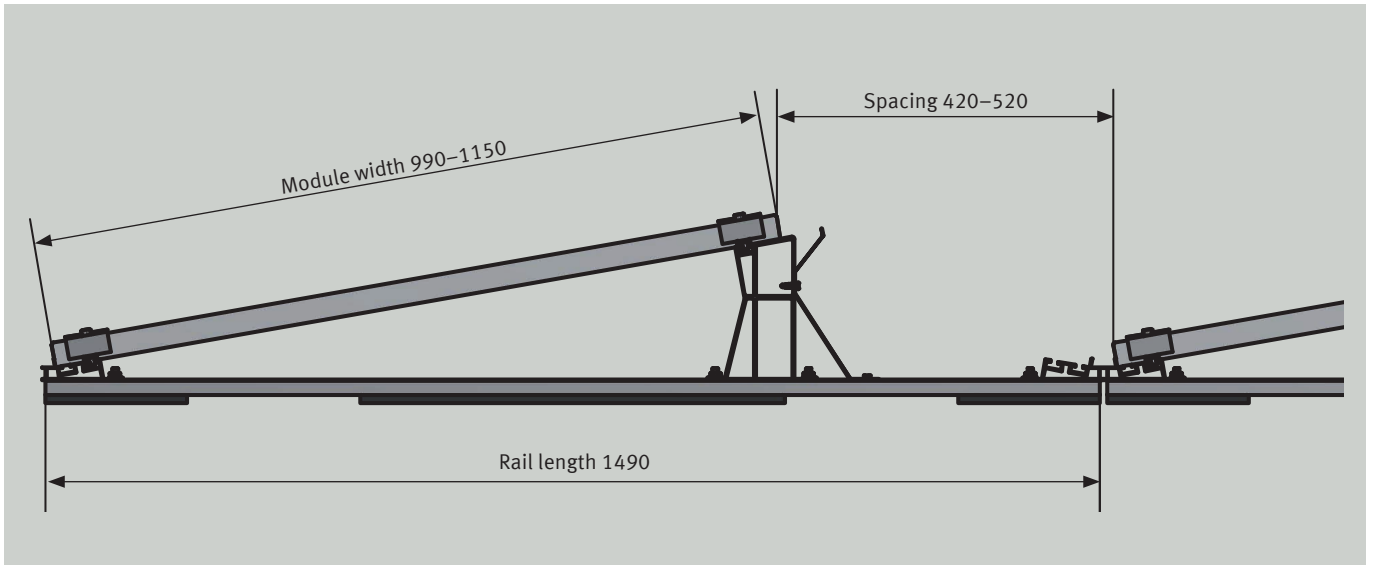
You only need to adjust the position of the rear module support to the module size you are using.



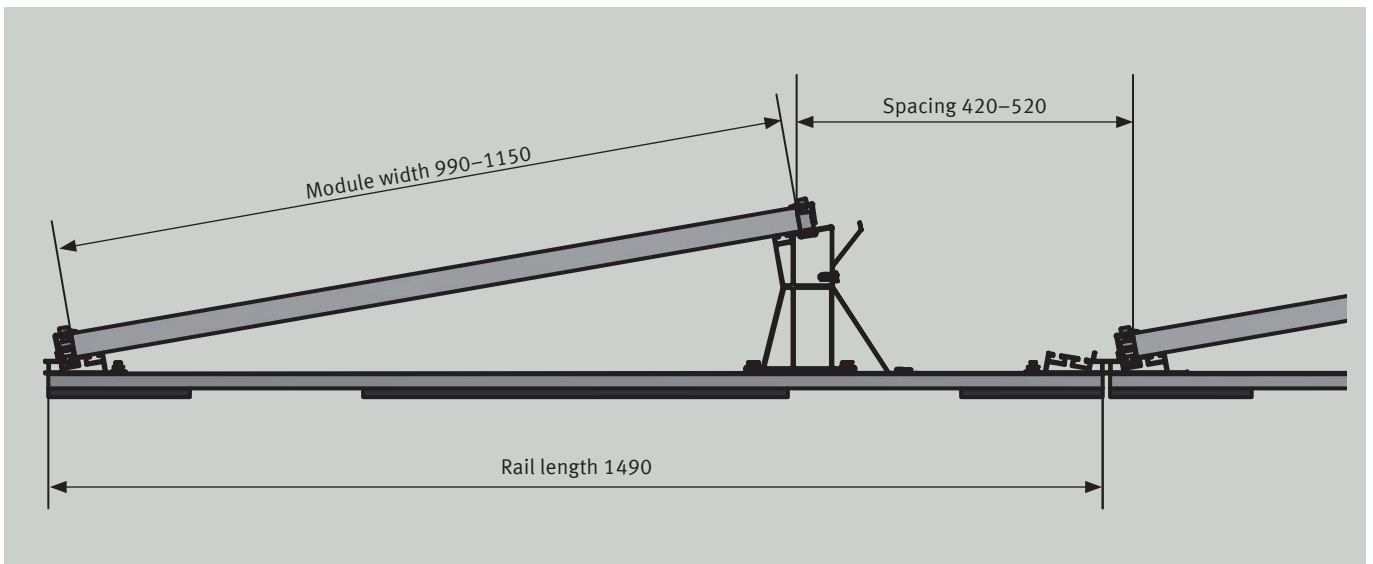
East/west system, clamping on the short side



East/west system, clamping on the long side



South-facing system, clamping on the short side

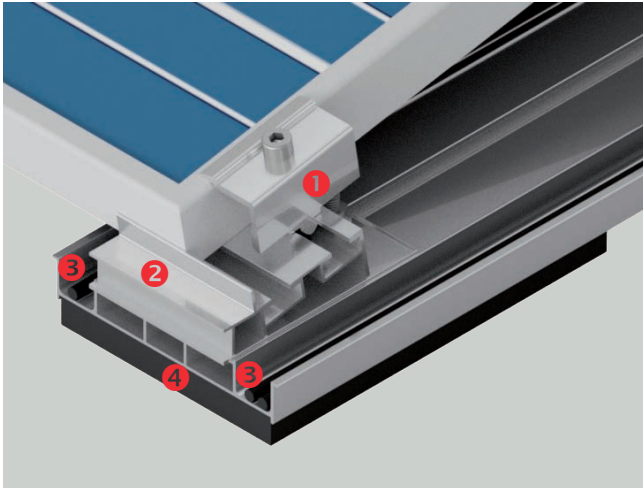


South-facing system, clamping on the long side

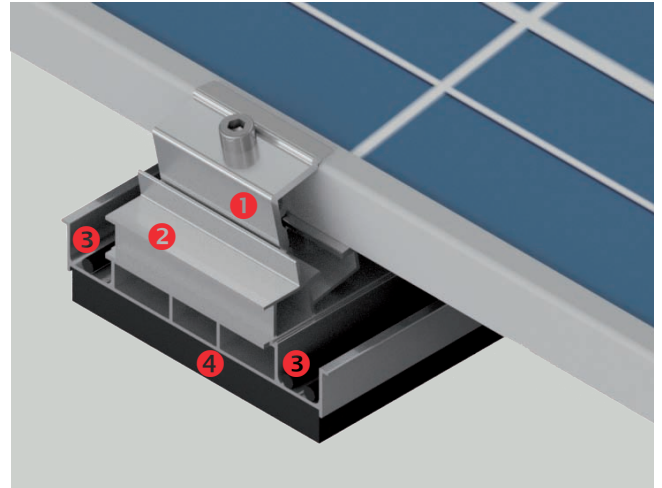
Base rail and front module support

The front module support is used for both clamping variants. It is screwed into the base rail and acts as a rail connector.

The rail has two integrated cable ducts. To reduce installation time on site, the rail is delivered pre-assembled with a building protection mat. You can choose between two different building protection mats (with or without laminated aluminium foil). This means the installation system is suitable for a wide variety of flat roofs, such as roofs with foil, bitumen, gravel and concrete surfaces).



Clamping on the short side



Clamping on the long side

- ❶ **Module end clamp, universal**
- ❷ **Module support, front**
- ❸ **Cable ducts**
- ❹ **Building protection mat**