



TRAPEZOIDAL ROOF SYSTEM FOR VERTICAL INSTALLATION

ALTEC SD_TRAFIX-V

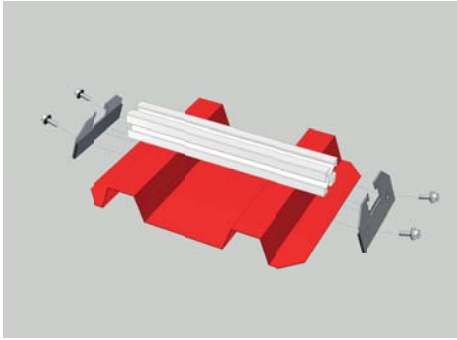
- universal use on almost all trapezoidal-profiled roof coverings
- guaranteed to function regardless of the ribbing gap
- simple and easy to install
- minimal stock-keeping
- reduced material costs, so excellent value for money
- direct fixing on the sheet metal

The **flexible trapezoidal sheet metal fixing** is designed for use on almost any trapezoidal-profiled roof. Made of stainless steel

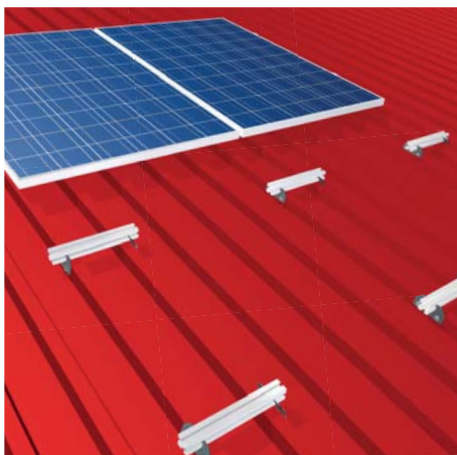
(1.4301), it is fixed in place using thin sheet metal bolts and is capable of supporting the installation profiles, and thus complete systems. Factory-fitted EPDM tape is used to seal the roof and/or any holes produced. Unlike conventional trapezoidal shoes, specially manufactured for each ribbing gap, this trapezoidal sheet metal fixing ensures **versatile use**. It is suitable for trapezoidal-profiled sheets with an angle of between 30° and 84°. The modules can therefore be installed parallel to the roof, as well as raised, depending on the roof pitch. This option provides **excellent value for money** and also offers **short delivery times**, due to the savings in terms of material and the use of short rail sections. We offer this system as separate components or as an assembly set.

10 years guarantee
on calculated mounting systems

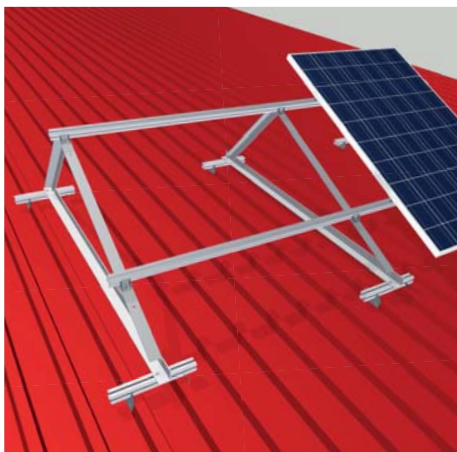




The profile rail is placed on the ribbing and aligned and then the sheet metal is inserted and bolted in place.



Installation parallel to the roof



Raised installation

Static information

The roof has to be capable of withstanding the additional loads resulting from the installation.

Adhere to the minimum sheet metal thickness determined by the building inspectorate approval of the thin sheet metal bolts.

The layers have to be adequately secured when fixed to sandwich elements.

Pay particular attention to length expansion.

We recommend adhering EPDM tape (40 × 30 × 3) to seal the rail support surfaces.

Component parts

- Trapezoidal sheet metal fixing with EPDM tape glued on Item No. 1TF5000102
- Thin sheet metal bolt Item No. 4BSRP0206025
- Profile rail 40 × 40 mm standard, 450 mm Item No. 130P04040S40
- EPDM strips 40 × 30 × 3 Item No. 1EPDM0400303

Set version 1

- Item No. 1TF5000204
2 trapezoidal metal fixings with 450 mm profile 40 × 40 standard, 4 thin sheet metal bolts, EPDM stripe

Set version 2

- Item No. 1TF5000205
as version 1, with end caps

Our team will be happy to help with specific requests.